

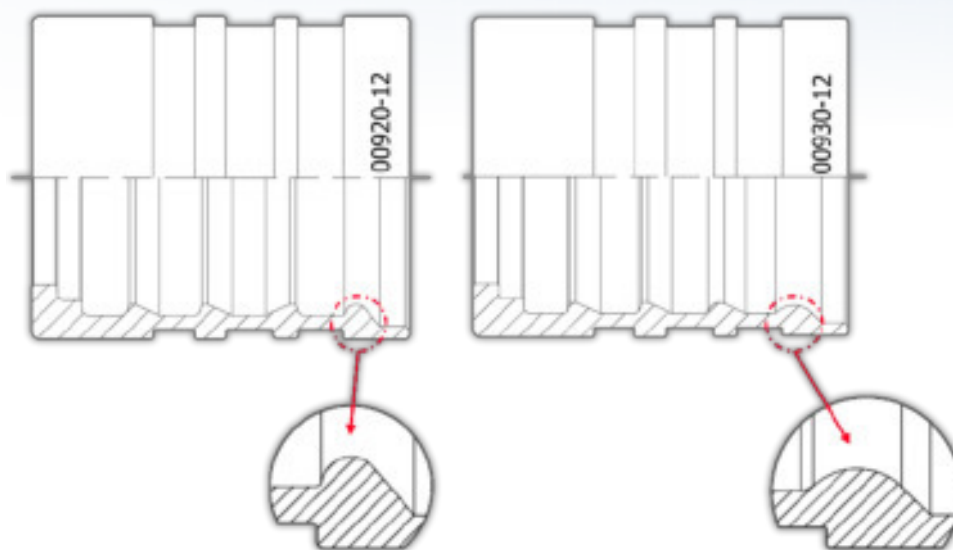
TECHNICAL UPDATE FERRULE M00930-12

As part of our continuous product improvement program, we are introducing a change to our fittings range with the phasing out of the **M00920-12 ferrule**.

This ferrule will be replaced by the new **M00930-12** reference.

The improved designs of this new reference provides an even more reliable and high-quality assembly for even better performance.

The new M00930-12 ferrule has an improved design for the last two teeth intended to optimise wire compression and improve overall crimping quality.



In particular, the improved geometry of the last tooth (*shown above*) has been proven to be highly effective at preventing wire breakage, whilst ensuring a robust grip on the hose reinforcement. This change has resulted in the new ferrule becoming approximately 2mm longer, however this does **not affect crimping parameters**, which will remain the same as listed for M00920-12 in the current publication of the **Crimping Booklet (March 2020 Edition)**.

This product enhancement will **not affect your price list** and any existing stock of the phased-out reference **can still be fully utilised**.

The phase-out process will occur over a number of weeks, during which time the new ferrules will be shipped instead of the old references.

Our technical experts are on hand to answer any questions you may have with regards to these phase-out proceedings - please contact your local Manuli Hydraulics office.